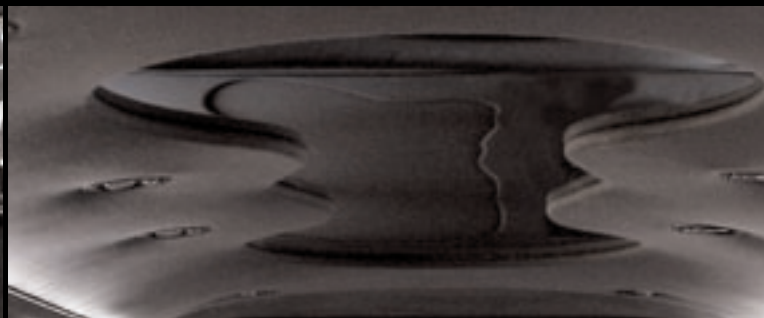




FEDERAL COACH 120" SILVERSTONE



Qualified Vehicle Modifier





FEDERAL COACH 120" SILVERSTONE SPECIFICATIONS



Qualified Vehicle Modifier

Standard Conversion Features

- A/C/Heat, auxiliary - MX9 & MX2 (cool only)
- Alternators, heavy duty (2)
- Antenna, power for TV
- Assist straps
- Battery, dual with auxiliary start
- Carpet, commercial grade
- Carpet overlay
- Condenser, extra
- Console, Driver's control panel with master switch, partition, intercom and (2) 12 volt outlets
- Consoles, rear
 - Overhead stargazer, halo lighting and six-color twinkle fiber optics
 - Overhead Control Panel with AM/FM/CD/DVD, lighted vanity mirrors (2), control switches for privacy partition, AC/Heat, intercom, console lights, mood lights and fiberoptics
- Beverage Center
 - right hand side with footbar protector, ice storage compartments, A/C outlets, premium speakers, fiberoptics., glassware for passengers, decanters, and champagne buckets
- Convenience Center, package tray with trash drop, power port
- Insulation, fully insulated cabin for maximum comfort
- Intercom, concealed
- Lighting
 - Floor entrance
 - Halo (fiberoptics)
 - Opera, exterior (12)
 - Overhead LED (8)
 - Reading
 - Stargazer ceiling & console
- Paint, exclusive DuPontChroma Premier® high gloss system
- Partition, Privacy, Single
- Pinstriping, tape
- Radio, AM/FM/CD/DVD in rear overhead with (4) speakers, (1) sub-woofer and lights
- Roof, vinyl, heavyweight top material
- Seat, Rear, J seat style, durable leatherette
- Seat, front OEM w/center armrest locked down
- Springs, heavy duty front
- TV, 15" flat panel on partition with (2) speakers
- Undercoating and soundproofing
- Windows, tinted

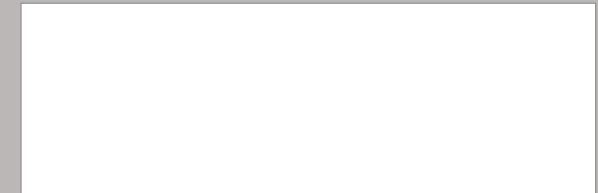
Optional Conversion Features

- Antenna, Boomerang with power boost
- Color change, exterior
- Fire extinguisher
- Gold Plate Package
- Intercom, hand held (exchange)
- Leather Seat, conversion
- Lights, flex cord reading (2)
- Lip well moulding, chrome
- Pillows, accessory (2)
- Rocker panel moulding, chrome
- Roof, full vinyl including sail panels
- Roof, European cloth, including sail panels
- Wood Package

Dimensions

	Inches	Metric
Chassis extension:	120"	304.8cm
Center head room	39.5"	100cm
Front head room	39.2"	99cm
Front leg room (max)	42.5"	108cm
Fuel capacity	19 gal.	71L
Gross vehicle weight	7,500lbs.	3401Kg
Overall length	338.9"	861cm
Overall height	58"	147cm
Overall width	78.2"	199cm
Rear head room	37.5"	95cm
Rear leg room (min)	43.3"	110cm
Steel belted radial whitewall tires	P245/60/R17	
Wheel base	237.7"	604cm

For more information contact this Federal Coach Representative.



Specifications and option availability subject to change without notice.